

# Diaphragm



ELTECH Systems Corporation  
100 Seventh Avenue  
Chardon, OH 44024 USA  
ph: [440] 285-0300

[www.eltechsystems.com](http://www.eltechsystems.com)

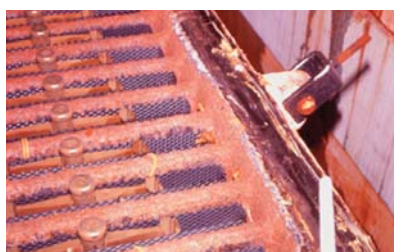
Chlor-Alkali Group

## SM-2™ Modifier

### SM-2 is a Proprietary, PTFE Based Thermal Polymer Modifier for Asbestos Diaphragms Used in Chlor-Alkali Cells



New SM-2 Diaphragm



SM-2 Diaphragm after 17 months

**SM-2 has been the preferred** modifier throughout the world for over two decades.

**Over 4 million tons** of chlorine per year are produced with SM-2 diaphragms.

#### Typical Chemical & Physical Characteristics

Property / Test	Specification
Sieve Retention (25 mesh)	40% Minimum
% PTFE	45 - 55%
Grade*	Fine - Medium Coarse

\*Grade is based on a comparison to product standards

#### SM-2 Catalog Numbers

	Catalog Number	Units
SM-2	7-412	1000 & 500 kg Pallets
Defoamer	7-413	5 Gallon Pail



SM-2™ is a trademark of ELTECH Systems Corporation.

All information, recommendations and suggestions appearing herein concerning the use of our products are based upon tests and data believed to be reliable. However, it is the user's responsibility to determine the suitability for his own use of the products described herein. Since the actual use by others is beyond our control, no guarantee, expressed or implied, is made by ELTECH as to the effects of such use or the results to be obtained, nor does ELTECH assume any liability arising out of the use by others of the products referred to herein. In addition, the information herein is not to be construed as absolutely complete since additional information may be necessary or desirable when particular circumstances exist or because of applicable laws or government regulations. Nothing herein contained is to be construed as a recommendation to infringe any patent.